

LX 200 Luxmeter

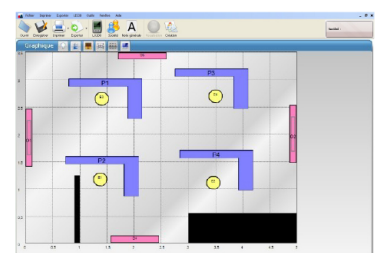


- **Instantaneous illuminance**
Displaying of instantaneous / maximum / minimum values.
- **Relative illuminance**
Allows a relative measurement to a reference point to quantify a light input or an illuminance decrease.
- **Evolution of illuminance according to weather conditions**
Storage of temporal evolution of illuminance for the follow up of environment conditions.
- **Cartography of illuminance – Spatial representation**
Coloured representation according levels obtained for printing of report (on a computer such as PC).
- **Uniformity**
Calculation of the min / ave ratio for determination of illuminance uniformity at workstation according to standards*.
- ***As per following standards :**
NF EN 12464-1 – Lighting of workplaces (inside)
NF EN 12464-2 – Lighting of workplaces (outside)
NF EN 12193 – Lighting of sports facilities

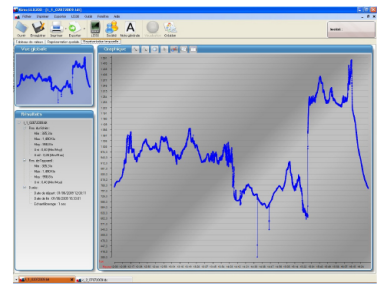
LX200 hand-held luxmeter, self-contained and automatic is specially designed to illuminance measurement. It allows storage of datasets for processing on a computer via the **LLX200** software.



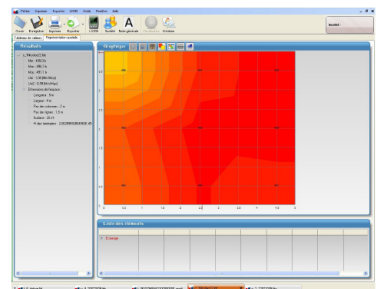
Determination of the illuminance uniformity of a local with graphic representation of workstations and luminaries



Following temporal evolution of illuminance of a workstation or a journey



Illuminance cartography with coloured nuance of a workstation (sports facilities)



• **Supplied with LLX200 software**
Operating software for data processing and printing of reports.



Illuminance measuring range

- ♦ from 0.1 to 200 000 Lux

Display	Unit	Resolution	Accuracy
0.1 à 10.0	lx	0.1	0.1 lux
10.0 à 99.9	lx	0.1	1%
100.0 à 999.9	lx	0.1	1%
1000 à 9999	lx	1	1%
10.00 à 99.99	klx	10	1%
100.0 à 200.0	klx	100	1%

- ♦ from 0 to 18585 fc

Display	Unit	Resolution	Accuracy
0.00 à 1.00	fc	0.01	0.01 fc
1.00 à 99.99	fc	0.01	1%
100.0 à 999.9	fc	0.1	1%
1000 à 9999	fc	1	1%
10.00 à 18.58	kfc	10	1%

Supplied with ...

- **LX200** housing with silicon photodiode sensor and glass filter correction.
- Transport case
- 3 LR3-AAA batteries
- Calibration certificate
- User manual
- **LLX200** software

Optional accessories

- Extension for remote cell, 5 m length
- Battery module, 5 days autonomy
- AC adapter USB type

Metrology

LX200 instrument is calibrated on a specific optical bench. It comes with its calibration certificate. Our standard reference instruments are duly linked to COFRAC.

Technical features

- Measuring range**.....from 0.1 to 200 000 Lux
from 0.01 to 18585 fc
- Spectral response**.....as per standard photopic curve
V(λ) NF C 42 -710
Class B
- Error limit V(λ) (f1)**< 6%
- True cosine evaluation (f2)**.....< 6%
- Linearity (f3)**.....< 5%
- Measurement capability***.....from 04h30 to 99 days
- Display**.....backlit LCD graphic 128x64.
- Working temperature**.....from 0°C to +50°C
- Storage temperature**.....from 0°C to +50°C
- Housing dimensions (without sensor)**.....120 x 58 x 34 mm
- Weight (housing+sensor+battery)**.....185 gr
- Mini-USB plug**.....for USB power supply adapter and data transfer
- Power supply**.....3 batteries 1.5V type LR3-AAA
- Autonomy**.....72 hours minimum, continuous operation
- Electromagnetic compatibility**.....according to 89/336/CEE
- Conformity**.....as per RoHS

*according to the mode (uniformity, temporal or cartography)

