

Tri-angle Gloss Meter WG68 (20, 60, 85 Degree)



Introduction:

WG68 gloss meter is produced according to the national verification regulation of JJG696 standard, adopt long life light source, good repeatability, small volume, high precision and good stability. It is mainly used coatings, printing ink, paint, paint, wood, marble, granite, to change polishing brick, brick of pottery and porcelain, plastic, paper, metal and non-metallic materials to the surface of the mirror gloss measurement, more stable performance, more durable, more comfortable;



Measuring Area Application:

20° (10*10mm) for high gloss, more than 200Gu.

60° (9*15mm) for semi gloss, from 10-200Gu.

85° (5*38mm) for low gloss, less than 10Gu.

Advantages :

1. One button to complete triangle measurement: one operation can complete three angle measurement; Measuring light incident angle meet ISO 2813 three measuring light incident angle. Three incident angle of mirror gloss meter is 20 °, 60 °, 85 ° respectively;

2. Optional angle mode: choose measuring angle or angle combination according to user needs.
3. Manually entering standard samples gloss data;
4. Humanized design, good man-machine communication interface;
5. Three angle can store 50000 testing records, storage structure is: 100 prototypes, each prototype with 500 testing data;
6. Data browsing and viewing function;
7. The machine has automatic shutdown function, low power warning functions, full data storage hint functions;
8. USB communication interface to communicate with PC;
9. PC software can be extended more functions.



+ 982165565901



+ 982144584619



+ 989034119385



Data Sheet

| | |
|----------------------------|--|
| Model | WG68 |
| Measurement Range | 20°: 0-2000 60°: 0-1000 85°: 0-160 |
| Application | paint, ink, stoving varnish, coating, wood products; Marble, granite, vitrified polished tile, pottery brick and porcelain; Plastic, printing, paper; Other metallic material. |
| Projection Angle | 20° 60° 85° |
| Measuring Spot | 20°: 10x10 60°: 9x15 85°: 5x38 |
| Measuring Mode | Automatic/manual/single/ average and combination angle/Show maximum/minimum value |
| Standard Sample Setting | Manually setting/bring out stored data for setting/manually setting tolerance |
| Data Storage | 50000 groups set standard sample in any stored data, user-define the tolerance range |
| Language | English |
| Output | Software to PC |
| Division Value | 0.1Gu |
| Repeatability | 0-100:0.2 > 100:0.2% |
| Reproducibility | 0.2Gu |
| Indication Error | 1.0Gu |
| International Standard 60° | ISO-2813/ASTM-C584/ASTM-D523/DIN-67530/ASTM-D2457/JND-A60/JND-P60/ISO7668 |
| National Standard 60° | GB 9754/GB 9966/GB 8807 - GB/T 9754,GB/T 13891,GB/T 7706,GB/T 8807 |
| Working Temperature | 10°C - 40°C |
| Storage Temperature | -10°C - 70°C |
| Humidity Range | Relative humidity less than 85%, without condensation |
| Volume | 159x49x72mm |
| Weight | 500g |
| Standard Accessories | Power adapter/User manual Warranty card/standard board/5V battery/USB cable /GlossW software (CD) |

+982165565901

+982144584619

+989034119385

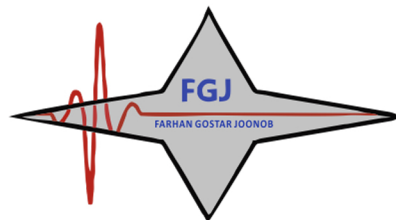
پتروفرهان گستر جنوب

FGJ-NDT.IR

DIGINDT.IR

Tehran, Tehransar

پتروفرهان گستر جنوب

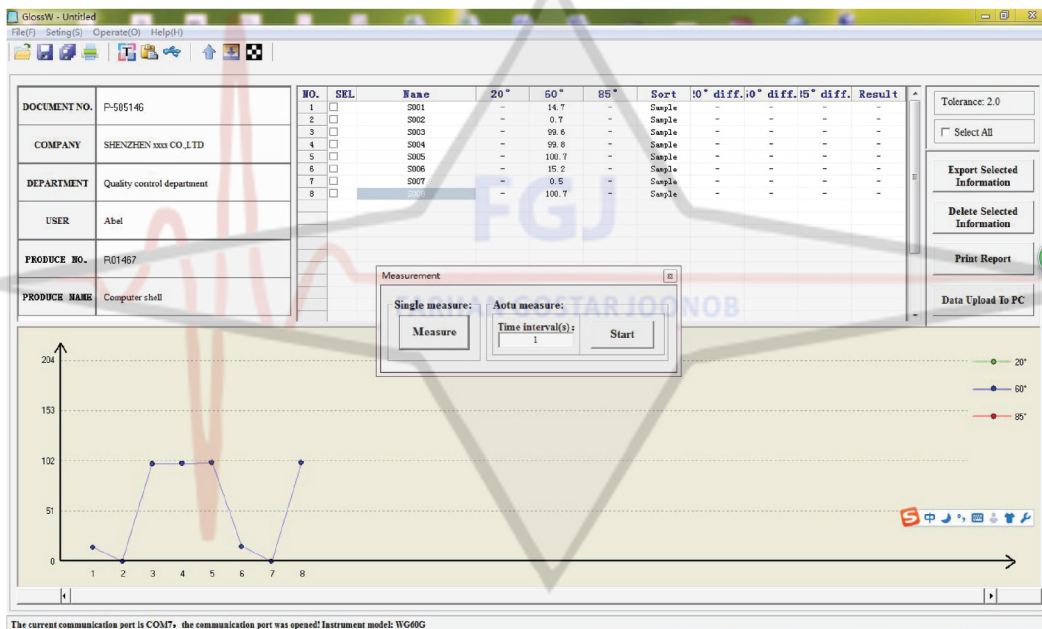


Make Measurement Easier

Professional Precise Portable



GlossW Software



+982165565901

+982144584619

+989034119385

پتروفرهان گستر جنوب

FGJ-NDT.IR

DIGINDT.IR