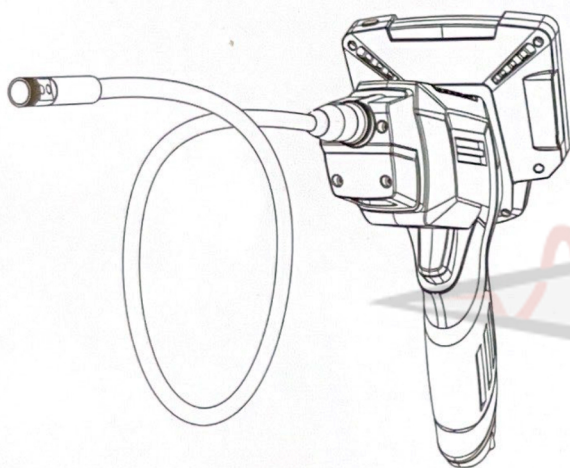


Dual Lens Inspection Camera



User Manual

EN

inskam112-2

SAFETY WARNING:

WARNING! Read and understand all instructions. Failure to follow all instructions listed below may result in electric shock, fire and/or serious personal injury.

WELCOME:

Welcome to buy this product. Before use, please read the instructions carefully. This product is a utility class equipment with the function of real-time video viewing, video recording and picture capturing, etc.. which is suitable for usage in narrow area and the area which cannot be observed by sight, such as: vehicle repair, sewer inspection/maintenance, etc.

FEATURES:

1. 1080P high resolution: 1080P HD and a large 4.3-inch screen can capture more details and provide you with the best visual experience.
2. Record video and take photos: The device can create high-definition photos and videos and save them in the SD card.
3. Dual lens design: 70 ° front mirror and 70 ° side mirror (total 140 ° viewing angle) help eliminate blind spots and take more detailed photos and videos.
4. Focusing distance: The focal length is 4 cm-500 cm.

EN-1

5. High-intensity auxiliary light source: 6 adjustable LED lights for easy use in dark environments.
6. IP67 waterproof: The device is equipped with a semi-rigid waterproof cable, which can be used in a humid environment.



Video



Take photo



4.3 inch



TF card



1080P



IP67



6 LED lights



Dual lens

APPLICATION:

1. **Tubular/Water Pipe Cleaning:** It helps to clean, rust, corrosion, dust and crack after the pipe is inspected.
2. **Shipbuilding industry:** used to inspect boilers, steam turbines, diesel engines, pipelines.
3. **Industrial machinery:** used to check for engine scars or wear, gearboxes, hydraulic systems, greatly reducing downtime..
4. **Electronics, electronics industry:** used to confirm the wiring status of the product, check the working condition of the machine, etc.

EN-2

+982165565901

+982144584619

+989034119385

پتروفرهان گستر جنوب

FGJ-NDT.IR

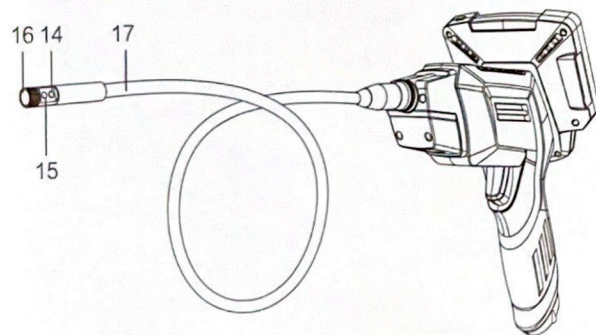
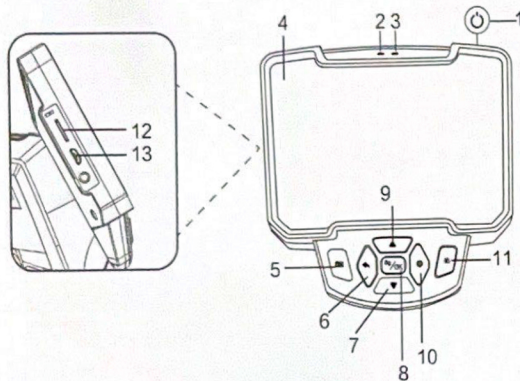
DIGINDT.IR

ACCESSORIES LIST:

1. LCD Digital endoscope
2. User manual
3. USB data cable
4. Accessories – hooks, magnets, side mirrors, protective cap

FEATURES:

(1) Part name and function



- | | |
|--------------------------------|-----------------------------------|
| 1 Power button | 10 Set button |
| 2 Charging indicator | 11 Light adjustment button |
| 3 Work indicator | 12 Micro TF card slot |
| 4 4.3 inch screen | 13 DC 5V input |
| 5 Photo / Video button | 14 Side mirror auxiliary lighting |
| 6 Back / File browse button | 15 Side mirror |
| 7 Scroll down button | 16 Front mirror |
| 8 Lens switch / confirm button | 17 Hardwire |
| 9 Up button | |

(2) Function introduction

1. **Power button:** --long press for 3 seconds to switch on and off.
Charging indicator: --Red light on when charging, full off.
2. **Work indicator:** --After the device is turned on, the work indicator is always blue.
3. **4.3 inch display screen:** --4.3 inch full color LCD screen, you can view the test video in real time.
4. **Photo / video button:**
--Photo preview mode, short press to take a photo, long press to record, and then click to stop recording.

5. Back / File browse button.

--Photo preview mode, short press to enter the file browsing page.

--Other modes: Short press to return to the previous menu.

6. Scroll down button:

--Move down or right.

7. Lens switch / confirm button:

--Photo preview mode, short press to switch lens.

--For other modes, short press to confirm.

8. Up button:

--Move up or left.

9. Set button:

--Short press to enter the menu page, where you can set the resolution / language setting / date, time / date label / brightness / screen saver / auto power off / formatting / default setting / version.

10. Light adjustment button:

--6 adjustable LED lights, the light brightness is divided into three levels of adjustment.

+982165565901

EN-3

+982144584619

+989034119385

EN-4

پتروفرهان گستر جنوب

FGJ-NDT.IR

DIGINDT.IR

EN-5

5. **Micro TF card slot:** --Maximum support 64GB MicroTF card, only support TF card in FAT32 format at level 10 or higher (normally shipped without TF card).

DC 5V input: --Power charging interface.

Side mirror auxiliary lighting: --Enhance the viewing effect of the side mirror.

Side mirror: --70 ° side mirror to help detect the side of the pipe.

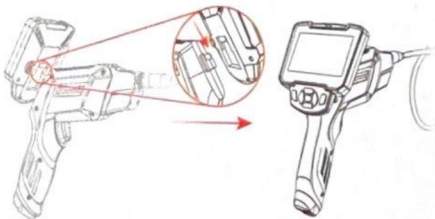
Front mirror: --70 ° front mirror to help detect the front of the pipe.

Hard wire: --Flexible semi-rigid cable, freely deformable.

INSTALLATION STEPS:

(1) Host installation

1. **Installation:** Align the connector on the back of the display with the connector on the handle, and then insert the connector on the back of the display and the connector of the host in the direction of the arrow, as shown in the following figure:



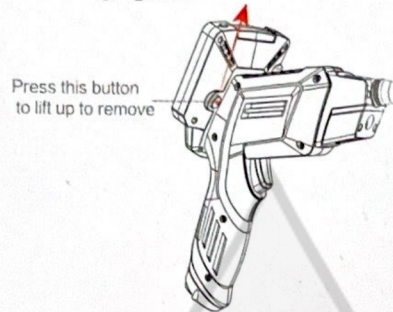
EN-6

+982165565901

+982144584619

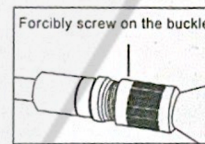
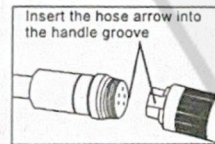
+989034119385

2. **Disassembly:** first hold the handle with your hand, then pull the trigger on the back of the host up and then pull it up, you can easily disassemble the host, as shown in the following figure:



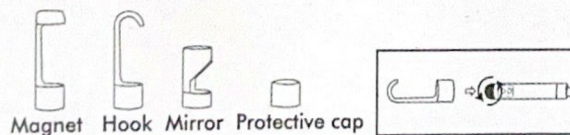
(2) Hose Installation

Install the flexible tube onto the handle by first making sure that the hose arrow is aligned with the arrow groove of the handle and forcibly connecting the two parts



(3) Accessories installation:

The accessories are installed as shown below:

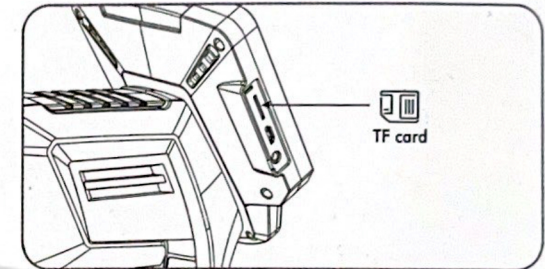


EN-7

STEPS FOR USAGE:

(1) Basic operation

1. Insert the MicroTF card (normally not equipped) into the MicroTF card slot and press gently until the TF card is locked. (Note: MicroTF cards of Class 10 or higher must be inserted to record and store pictures and videos).



2. Press and hold the 3s **power / set button** to turn on the device, then press the light adjustment / up button to adjust the brightness of the lens.
3. Short press to take a picture, **video / confirm button** to take a picture, long press to record a video, press again to stop recording.
4. Short press the **Back/File Browse button** to enter the file browsing page to view or delete the captured and recorded files.

EN-8

پتروفرهان گستر جنوب

FGJ-NDT.IR

DIGINDT.IR