



FGJ-NDT.IR
DIGINDT.IR



DT-175CV1

VOLTAGE/CURRENT DATA LOGGER

True RMS AC Voltage/Current Datalogger

Datalog up to 100,000 readings

With user programmable sample rate from
1 second to 24 hours

FEATURES

- Measure True RMS AC Voltage (600V) or Current (200A)
- Readings can be downloaded to your PC via the USB interface and analyzed using the included software or exported to a spreadsheet
- LCD indicates time/date, current readings, and Min/Max
- Normal, Peak and Capture (user-specified trigger level) recording modes
- Auto Power off and battery check
- Complete with current clamp, test leads, USB cable, Windows @ compatible software, universal AC Adaptor, and four AAA batteries

Datalog up to 100,000

True RMS Current or Voltage readings.

Captured readings can be downloaded to your PC, using the included USB cable and software, for further analysis. Readings can also be exported into a spreadsheet for creating charts and graphs



شرکت پتروفرهان گستر جنوب

www.cem-india.com / www.cem-instruments.in

شرکت پتروفیرهان گستر جنوب

DT-175CV1

Voltage/Current Data Logger



SPECIFICATIONS

Function	Range	Resolution	Basic Accuracy
AC Current	10 to 200A	0.1A	± (2% rdg ± 1A)
AC Voltage	10 to 600V	0.1V	± (1.5% rdg ± 1V)

Memory : 100,000 points

Sampling Rate : 1 second to 24 hours

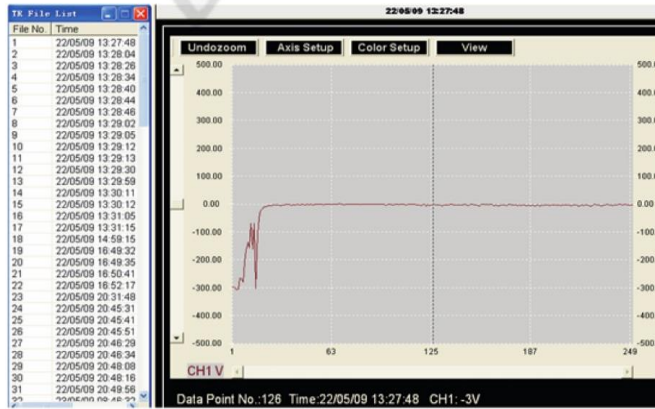
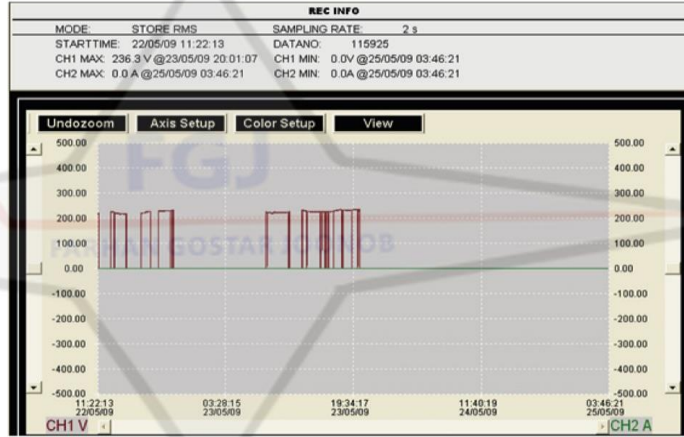
PC Interface USB includes software

Power : 4 x AAA batteries

Dimensions : 4.5 x 2.5 x 1.3" (114 x 63 x 34mm)

Weight : 8.7oz (248g)

SAMPLE SCREEN SHORT



+982165565901

+982144584619

+989034119385

Tehran, Tehransar