



ARTICULATING ULTRAVIOLET (UV) VIDEO BORESCOPE



Full-Color, IPS Anti-Glare LCD Display

High-Capacity SD Storage and USB Connectivity

Joystick-Controlled, 360° Camera Articulation

Video Start-Stop

Ergonomic Pistol Grip Design

IP 54 Base Unit

Rechargeable Li-ion Battery 4 Hour Runtime

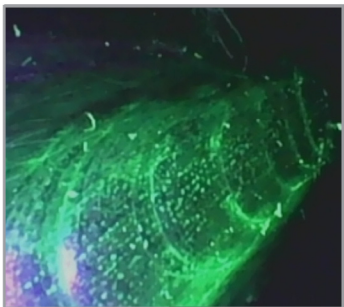
On-Board Image Processing

Image Playback/Return/Switch Mode

Image Capture Trigger

Tungsten Braided IP 67 Insertion Tube

365nm Ultraviolet Illumination



ULTRAVIOLET LIGHT

Available in lengths of 1.0m, 1.5m or 3.0m to suit any application. UV light can help detect marks and substances that can't be found under ordinary white light. It is widely used in the work of special coating reverse optimization and hazardous article searching where UV reactant can be easily detected.



ULTRA-PORTABLE DESIGN

No need for a separate monitor. Our lightweight, compact design has a built-in, full-color LCD display. All image capture, storage and processing is handled within the standalone unit, and the rechargeable Li-ion battery delivers up to 4 hours of cord-free run time.



DIRECT RESPONSE ARTICULATION

Designed for responsiveness and accuracy, the direct mechanical articulation never requires calibration, and the camera/LED module stays in place even when your thumb is removed from the joystick.



UNRIVALED SERVICE AND EXPERTISE

The VJ-3 is brought to you by the same team of borescope experts that changed the industry 10 years ago with the world's first mechanically articulating, joystick-controlled video borescope. Find out why we are still the #1 seller of borescopes in the US.

INSERTION TUBE	Outer Diameter	3.9mm	6.0mm
	Length	1.5m	1.0m, 1.5m, 3.0m
	Exterior Material	Tungsten EasyGlide, crush-resistant	
	Chemical Compatibility	Water, machine oil, heating oil, diesel, 3.5% saline concentrate	
	Articulation Range	360° around, 160±10° backward	
OPTICS	Field of View	100° x 75°	
	Depth of Field	2.0mm - 50.0mm	4.0mm - ∞
	Effective Pixels	450,000 pixels	
	Illumination Method	6 Super high-intensity ultraviolet LEDs	
	Illumination Output	Wavelength = 365nm / Intensity ≥ 1200 μW/cm ²	
BASE UNIT	Display Monitor	3.5" IPS anti-glare LCD, 640*480 resolution	
	Articulation Control	Thumb-actuated, mechanical rocker	
	Joystick Lock	Automatic	
	Brightness Control	6-step LED brightness adjustment	
	Control Buttons	Image capture, video capture, LED control, frame rotation, freeze frame, 4X zoom, menu access / navigation	
	Playback	Photos, videos (w/wo audio), thumbnail view	
	Audio / Microphone	3.5mm headset / microphone jack	
	Internal storage	16GB SD Card / 10,000 photos or 8 hours video	
	Data I/O ports	SD card, micro USB, TV Out (NTCS / PAL) or HDMI	
	Battery	One 18650B PCB-Protected Li-ion battery (replaceable)	
	AC Power (optional)	100V - 240V	
	Operating Method	One handed, portable	
	Dimensions	13.0" x 12.0" x 4.5"	
	Weight	2.2 lbs. / 1.0 kg	
MENU FUNCTIONS AND OPTIONS	User Interface	Drop down operating menu	
	File Management	Photo and video recording, playback, thumbnail preview, delete	
	Image Control	Image rotation, live freeze, zoom in/out	
	Image Format	JPEG, optional date and time stamp	
	Video Format	AVI, optional date and time stamp	
	Language	English, Spanish	
OPERATING LIMITS	Run Time	≤ 4 Hours	
	Operating Temp. Base Unit	-20 - 50°C, -5 - 120°F	
	Operating Temp. Insertion Tube	-10 - 50°C, 15 - 120°F	
	IP Rating, Insertion Tube	IP67	
	IP Rating, Base Unit	IP54	