

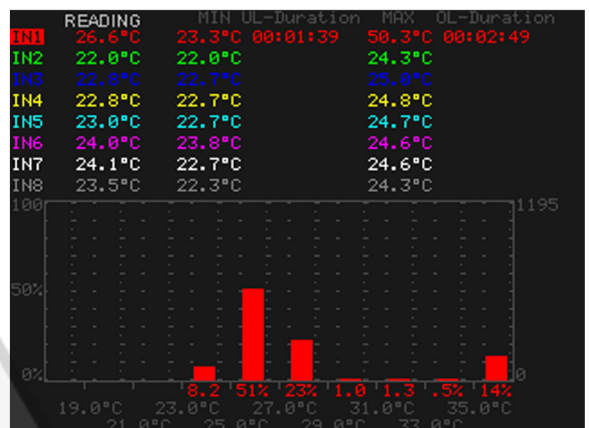
PROVA®

PROVA 830

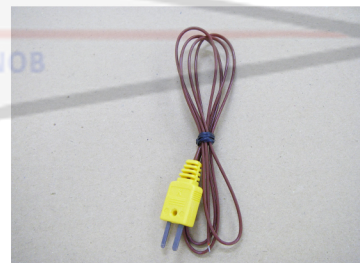
Portable Color Paperless Recorder

CE

Statistics (Histogram)



K-type thermocouples



Features:

- Prova 830 can work as **Multi-input thermometer** or **Paperless recorder**
- **5.7" Color TFT LCD** (320 x 240) with **backlight**
- **8 input** temperature measurement/logging (°C/°F)
- Color graphic display of **8 curves** at the same time
- Display of max and min values for each input
- Selection of **11 types** of thermocouple
- Easy socket for thermocouple mini connector
- Basic accuracy $0.1\% \pm 1^\circ\text{C}$ (K type)
- Programmable **Hi-Lo alarm** with timers when out of HI-LO limits
- **Sampling rate** 8 inputs / 1 second
- 28 hour recording with **Lithium battery** of 3400mAH
- Standard **2G SD** memory card (stores 3.8-year of data)
- **SD card** directly read by PC
- Easy data file management (Read and Delete functions)

+982165565901

+982144584619

+989034119385

پتروفرهان گستر جنوب

FGJ-NDT.IR

DIGINDT.IR

- Built-in calendar clock
- Accept **analog outputs** from instruments
- Independent input setup (type of thermocouple, Hi-Lo alarm values, name of Engineering Unit)
- Isolated input protection of 350Vp-p between any two inputs
- **Programmable Engineering Unit** (E.U.) to integrate analog output (-60 to 60 mV) from instruments (e.g. Sound level meter, Humidity meter, Current adaptor)
- **Screen hardcopy** into bit map files for easy documentation
- **Ready to use** package (thermocouples, SD card, and battery)
- **Digital and analog** (bargraph) data display
- **Statistics data** (Histogram) for easy analysis
- Easy curves manipulation (hide or display selected curves)

Electrical Specifications: (23°C±5°C)

Type	°C		°F	
	Range	Accuracy	Range	Accuracy
K	-200 ~ -150	±3.0°C	-328 ~ -238	±5.4°F
	-150 ~ -100	±2.0°C	-238 ~ -148	±3.6°F
	-100 ~ 999.9	±0.1% ±1.0°C	-148 ~ 999.9	±0.1% ±1.8°F
	1000 ~ 1370	±0.2% ±1.0°C	1000 ~ 2498	±0.2% ±1.8°F
J	-200 ~ -100	±2.5°C	-328 ~ -148	±4.5°F
	-100 ~ 100	±1.5°C	-148 ~ 212	±2.7°F
	100 ~ 999.9	±0.1% ±1.0°C	212 ~ 999.9	±0.1% ±1.8°F
			1000 ~ 1832	±0.2% ±1°F
E	-150 ~ -100	±2.0°C	-238 ~ -148	±3.6°F
	-100 ~ 760	±0.1% ±1.0°C	-148 ~ 999.9	±0.1% ±1.8°F
			1000 ~ 1400	±0.2% ±1°F
T	-200 ~ -150	±3.0°C	-328 ~ -238	±5.4°F
	-150 ~ -100	±0.1% ±1.5°C	-238 ~ -148	±0.1% ±2.7°F
	-100 ~ 400	±0.1% ±0.5°C	-148 ~ 752	±0.1% ±0.9°F
R/S	0 ~ 100	±5.0°C	32 ~ 212	±9.0°F
	100 ~ 300	±3.0°C	212 ~ 572	±5.4°F
	300 ~ 999.9	±0.1% ±2.0°C	572 ~ 999.9	±0.1% ±3.6°F
	1000 ~ 1600	±0.1% ±2.0°C	1000 ~ 2912	±0.1% ±3.6°F
N	0 ~ 999.9	±0.1% ±1.0°C	32 ~ 999.9	±0.1% ±1.8°F
	1000 ~ 1300	±0.2% ±1.0°C	1000 ~ 2372	±0.2% ±1.8°F
L	-200 ~ 900	±0.1% ±1.0°C	-328 ~ 999.9	±0.1 % ±1.8°F
			1000 ~ 1652	±0.2 % ±1°F
U	0 ~ 600	±0.1% ±1.0°C	32 ~ 999.9	±0.1% ±1.8°F
			1000 ~ 1112	±0.2% ±1°F

+982165565901

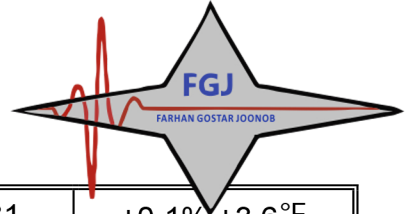
+982144584619

+989034119385

پتروفرهان گستر جنوب

FGJ-NDT.IR

DIGINDT.IR



B	600 ~ 999.9	$\pm 0.1\% \pm 2.0^{\circ}\text{C}$	1112 ~ 1831	$\pm 0.1\% \pm 3.6^{\circ}\text{F}$
	1000 ~ 1760	$\pm 0.1\% \pm 2.0^{\circ}\text{C}$	1832 ~ 3200	$\pm 0.1\% \pm 3.6^{\circ}\text{F}$
C	0 ~ 999.9	$\pm 0.1\% \pm 1.5^{\circ}\text{C}$	32 ~ 999.9	$\pm 0.1\% \pm 2.7^{\circ}\text{F}$
	1000 ~ 1760	$\pm 0.2\% \pm 1.5^{\circ}\text{C}$	1000 ~ 3200	$\pm 0.2\% \pm 2.7^{\circ}\text{F}$
mV	-10 ~ 60	$\pm 0.06 \text{ mV}$	-10 ~ 60	$\pm 0.06 \text{ mV}$
mV	-50 ~ -10	$\pm 0.1 \text{ mV}$	-50 ~ -10	$\pm 0.1 \text{ mV}$

General Specifications:

LCD	5.7" Color TFT LCD (320 x 240) with backlight
Battery Type:	Rechargeable Lithium Battery, 3400mAh (11.1V)
AC Adaptor:	DC Regulated 12V / 300mA output AC 110V or 220V Input
Power Consumption:	220mA (very bright backlight) 150mA (bright backlight) 120mA (dark backlight)
Cold Junction Compensation Accuracy:	$\pm 0.5^{\circ}\text{C} / \pm 0.9^{\circ}\text{F}$
Temperature Coefficient:	0.01% of F.S. / $^{\circ}\text{C}$
Isolated Input Protection between any two inputs:	350Vp-p
Dimension:	257(L) x 155(W) x 57(H) mm, 10.1" (L) x 6.1" (W) x 2.2" (H)
Weight:	1160g / 40.9oz (Batteries included)
Operation Environment:	$0^{\circ}\text{C} \sim 50^{\circ}\text{C}$, 85% RH
Storage Environment:	$-20^{\circ}\text{C} \sim 60^{\circ}\text{C}$, 75% RH
Accessories:	AC power adaptor x 1, Lithium battery (11.1V) x 1, USB cable x 1, SD card (2GB or larger) x 1, Carrying bag x 1, User manual x 1, Software CD x 1, Software manual x 1, K-type thermocouples ($-50 \sim 200^{\circ}\text{C} / -58 \sim 392^{\circ}\text{F} \pm 0.75\%$): 1-meter x 7pcs.; 3-meter x 1pc.
Options:	SDHC card (8GB, Maximum) Mini connector for analog Input Optical RS-232 to USB bridge

+982165565901

+982144584619

+989034119385

پتروفرهان گستر جنوب

FGJ-NDT.IR

DIGINDT.IR