



## Specifications FD-560

Testing Range: 0-10000 mm ,at steel velocity

Material Velocity Range: 100~20000 m/s

Pulse Repetition Frequency: 10-2000Hz

Dynamic Range:  $\geq 38$ dB

Linearity: Horizontal:  $\pm 0.2\%$ , Vertical: 2.0% (Horizontal:  $\pm 0.2\%$  FSW Vertical: 0.25% FSH )

Resolving Power:  $> 40$ dB (5P14)

Sensitivity Leavings:  $> 68$ dB

Reject (suppression): 0 to 80% full screen height

500 independence setup, any criterion can be input freely, we can work in the scene without test block ;

Large Memory: 1000 A graph

Testing Modes: Pulse echo, dual element and thru-transmission

Probes Optional Types: Single Straight, Single Angle, Dual Straight, Dual Angle, Through, Creeping, Surface

Gate Monitors: Two independent gates controllable over entire sweep range

Display Units: Inch or millimeter

Power Requirements: AC Mains 100-240 VAC, 50-60 Hz

Display Delay: -20 to 3400  $\mu$ s

Probe Delay/Zero Offset : 0 to 99.99  $\mu$ s

Battery: Internal rechargeable Li-ion battery pack rated 7.2V at 8000 mAh

Battery Working Time: 15 hours nominal operating time depending on display brightness

Battery Charging Time: 4 hours typical recharge time

Size: H×W×D(mm): 250×165×55 (mm)

Weight : 1.2kg

Operating Temperature: -10°C to 50°C

Storage Temperature: -30°C to 50°C

Pulse Energy: 70V, 100V, 200V, 300V, 400V, 500V selectable

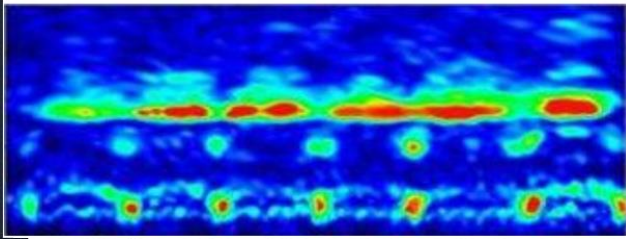
Rectification: Positive half wave, negative half wave, full wave, RF System

Bandwidth (amplifier bandpass ): 0.2 to 25 MHz

Gate Monitors: Two independent gates controllable over entire sweep range

Sensitivity: 120 dB max in selectable resolution 0.1, 1.0, 2.0, 6.0 dB.

Transducer Connections: BNC or LEMO optional



Standard Package

Portable Ultrasonic Flaw Detector FD560 1pc

Straight Beam Transducer (2.5 MHz,  $\Phi 20$ ) 1pc

Angle Beam Transducer (4 MHz, 8 mm $\times$ 9 mm, 60 $^\circ$ ) 1pc

Connect Cable for the transducer (BNC-LEMO 00, or optional LEMO 01-LEMO 00) 1pc

Rechargeable Li-Ion Battery Package, 8 amp hour 1pc

Power supply/charger unit 1pc

Operating Manual in English 1pc

## Details

### Top features

- ★ User friendly operation such as calibration, making curves, etc.
- ★ All curve tools included: DAC, AVG, TCG AWS, etc.
- ★ Pulse repetition frequency: 10-2000Hz precise adjust, high speed scan, no miss out.
- ★ High signal to noise ratio, clear and stable echo, anti-noise design, perfect for tough working conditions.
- ★ 12-digit AD, high speed sampling leads to better echo diagram with all details. Sensitive and can detect even tiny flaws.
- ★ Customer can use probe frequency 20M .
- ★ IP65 protection standard. protective rubber casing. damping support makes it stands in any angle.
- ★ Battery works continuously 15 hours after one charge.

 +982165565901

 +982144584619

 +989034119385

پتروفرفهان گستر جنوب

**FGJ-NDT . IR**

**DIGINDT . IR**